



***Georgia Department of Public Health***

**North Central Health District**

**2018 COUNTY**

**HEALTH RANKINGS**

**WILKINSON COUNTY**

**DATA REQUEST**

Amber Erickson, MPH

Director of Epidemiology and Assessment

Bill Johnson, MPH

Communicable Disease Specialist

6/20/2018

**Table of Contents**

Overview of County Health Rankings..... 2

Overview of North Central Health District Rankings..... 3

Wilkinson County ..... 4

    Demographics ..... 4

    AREA: Strength ..... 5

        Excessive Drinking..... 5

        Alcohol-Impaired Driving Deaths..... 6

        Uninsured..... 7

        Severe Housing Problems ..... 8

    AREA: Explore ..... 9

        Smoking ..... 9

        Obesity ..... 10

        Access to Exercise Opportunities..... 11

        Primary Care Physicians..... 12

        Unemployment..... 13

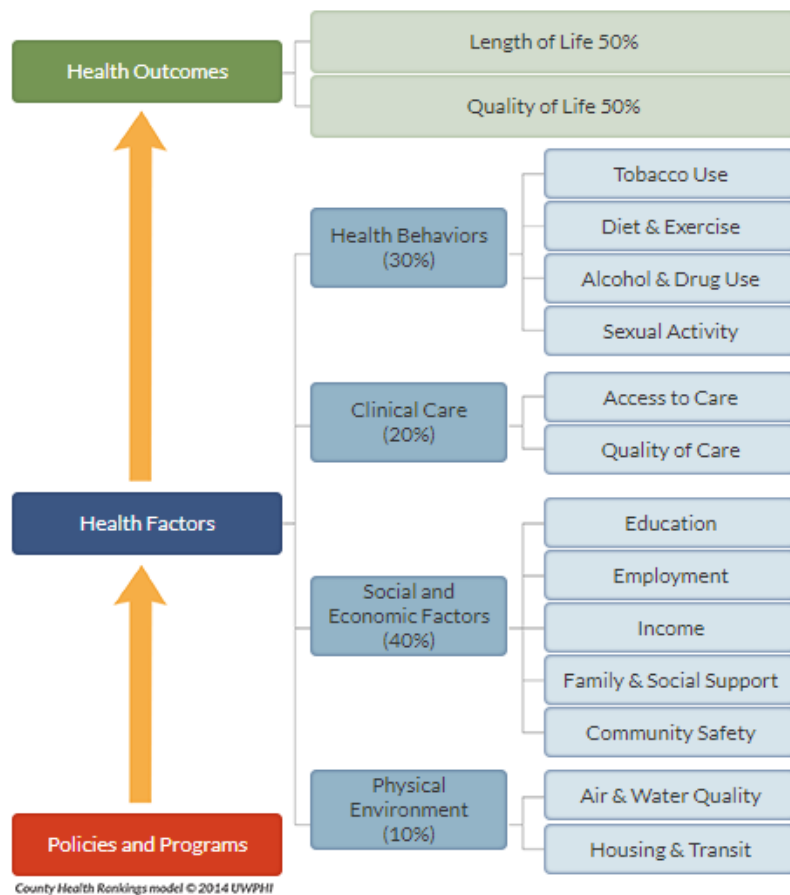
Summary..... 14

References..... 16

## Overview of County Health Rankings

Published by the University of Wisconsin Population Health Institute and the Robert Wood Johnson Foundation, the County Health Rankings rank the health of nearly every county in the nation and illustrate what we know about what is keeping people healthy, making them sick, and what we can do to create healthier communities by using the model to right. The information is compiled for the Rankings by using county-level measures from a variety of national data sources. These measures are standardized and combined using scientifically informed weights and are then rank counties by state, providing two overall ranks:

1. Health outcomes: how healthy a county is now.
2. Health factors: how healthy a county will be in the future.



The information provided by this report explores the size and nature of health differences by place and race/ethnicity in Georgia and how state and community leaders can take action to create environments where all residents have the opportunity to live their healthiest lives (CHR&R, 2018). Specifically, this report will help illuminate:

1. Overview of the Rankings for Counties within the North Central Health District.
2. Snapshot of the areas of strength and areas to explore within each district county.
3. Description of how the county health department and district office are working to close identified gaps.
4. What communities can do to create opportunity and health for all.

### Overview of North Central Health District Rankings

The overall rankings in health outcomes represent how healthy counties are within the state. The healthiest county in the state is ranked #1. Ranks for health outcomes are based on an equal weighting of length and quality of life. Ranks for health factors are based on weighted scores for health behaviors, clinical care, social and economic factors, and the physical environment. Overall health outcomes and health factor ranks have been compared to 2017 ranks. A red number indicates a negative move in rank and a green number indicates a positive move in rank.

<b>North Central Health District Rankings</b>				
	<b>Health Outcomes</b>		<b>Health Factors</b>	
	<b>2017</b>	<b>2018</b>	<b>2017</b>	<b>2018</b>
<b>Baldwin</b>	104	109	134	134
<b>Crawford</b>	70	51	58	75
<b>Hancock</b>	128	147	154	150
<b>Houston</b>	27	21	41	38
<b>Jasper</b>	55	43	70	77
<b>Jones</b>	28	19	33	28
<b>Macon-Bibb</b>	142	143	97	98
<b>Monroe</b>	51	65	30	33
<b>Peach</b>	101	105	116	112
<b>Putnam</b>	78	64	71	81
<b>Twiggs</b>	106	135	141	148
<b>Washington</b>	59	83	81	94
<b>Wilkinson</b>	107	139	94	82

## Wilkinson County

The following information is a snapshot of the Wilkinson County Health Rankings Data with focus on measures that are suggested by County Health Rankings as an area of strength or an area to explore. A description of Wilkinson county health department (WCHD) and health district activities within both areas are provided to show how gaps are being addressed locally.

### Demographics

#### WILKINSON COUNTY DEMOGRAPHICS

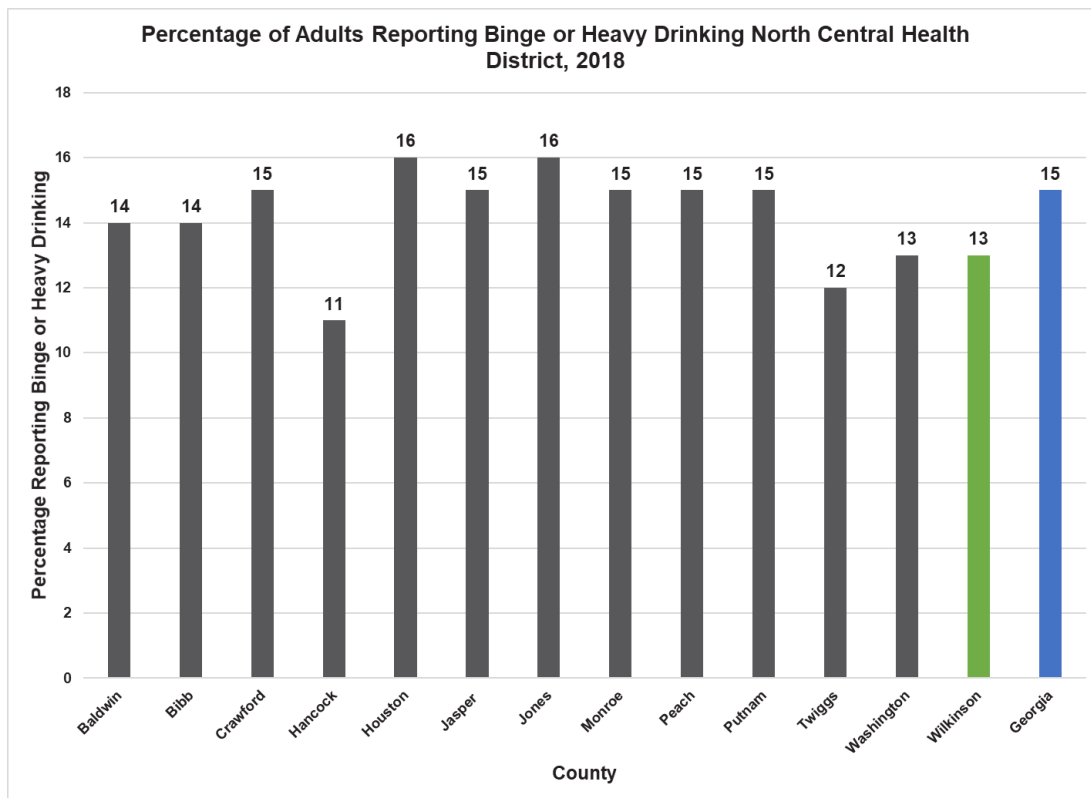
	County		Georgia	
	Population	Percent	Population	Percent
<b>POPULATION</b>	9,104		<b>10,310,371</b>	
<b>BELOW 18 YEARS OF AGE</b>	2,094	21.7%	2,515,731	24.4%
<b>65 AND OLDER</b>	1,702	16.6%	1,350,659	13.1%
<b>RACE/ETHNICITY</b>				
NON-HISPANIC AFRICAN AMERICAN	3,514	70.1%	3,206,525	31.1%
AMERICAN INDIAN AND ALASKAN NATIVE	46	0.2%	51,552	0.5%
ASIAN	55	0.2%	422,725	4.1%
NATIVE HAWAIIAN/PACIFIC ISLANDER	0	0%	10,310	0.1%
HISPANIC	237	1%	969,175	9.4%
NON-HISPANIC WHITE	5,153	27.8%	5,505,738	53.4%
<b>NOT ENGLISH PROFICIENT</b>	0	0%	309,311	3.0%
<b>FEMALE</b>	4,725	47%	5,289,220	51.3%
<b>RURAL</b>	9,104	100%	2,567,282	24.9%
<b>MEDIAN INCOME (DOLLARS)</b>	\$38,827		\$51,037	
<b>POVERTY</b>				
TOTAL POPULATION	20.8%		17.8%	
CHILDREN UNDER 18	33.1%		25.4%	
MARRIED-COUPLE FAMILIES	7.6%		9.2%	
SINGLE FEMALE HOUSEHOLDER FAMILIES	52.2%		42.9%	
<b>EDUCATIONAL ATTAINMENT (25 YEARS AND OVER)</b>				
LESS THAN 9 <sup>TH</sup> GRADE	4.8%		5.2%	
9 <sup>TH</sup> TO 12 <sup>TH</sup> GRADE, NO DIPLOMA	12.5%		8.9%	
HIGH SCHOOL GRADUATE (INCLUDES EQUIVALENCY)	50.1%		28.1%	
SOME COLLEGE, NO DEGREE	18.4%		21.0%	
ASSOCIATE'S DEGREE	5.6%		7.4%	
BACHELOR'S DEGREE	4.9%		18.3%	
GRADUATE OR PROFESSIONAL DEGREE	3.7%		11.1%	

**AREA: Strength**

**Excessive Drinking**

Data Definition: Excessive Drinking is the percentage of adults that report either binge drinking, defined as consuming more than 4 (women) or 5 (men) alcoholic beverages on a single occasion in the past 30 days, or heavy drinking, defined as drinking more than one (women) or 2 (men) drinks per day on average.

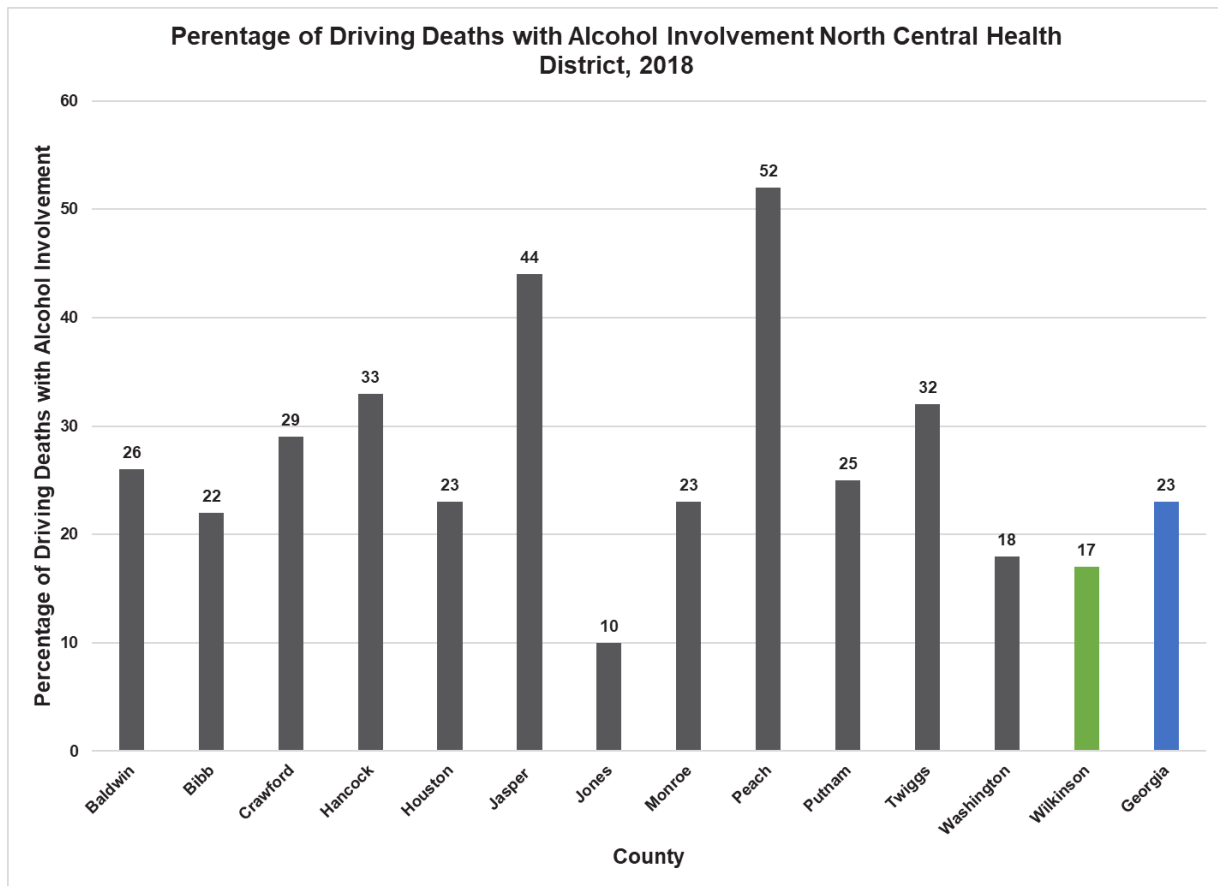
Source: The Behavioral Risk Factor Surveillance System (BRFSS) is a state-based random digit dial (RDD) telephone survey that is conducted annually in all states, the District of Columbia, and U.S. territories. Data obtained from the BRFSS are representative of each state's total non-institutionalized population over 18 years of age and have included more than 400,000 annual respondents with landline telephones or cellphones since 2011. Data are weighted using iterative proportional fitting (also called "raking") methods to reflect population distributions.



### Alcohol-Impaired Driving Deaths

Data Definition: Alcohol-Impaired Driving Deaths is the percentage of motor vehicle crash deaths with alcohol involvement.

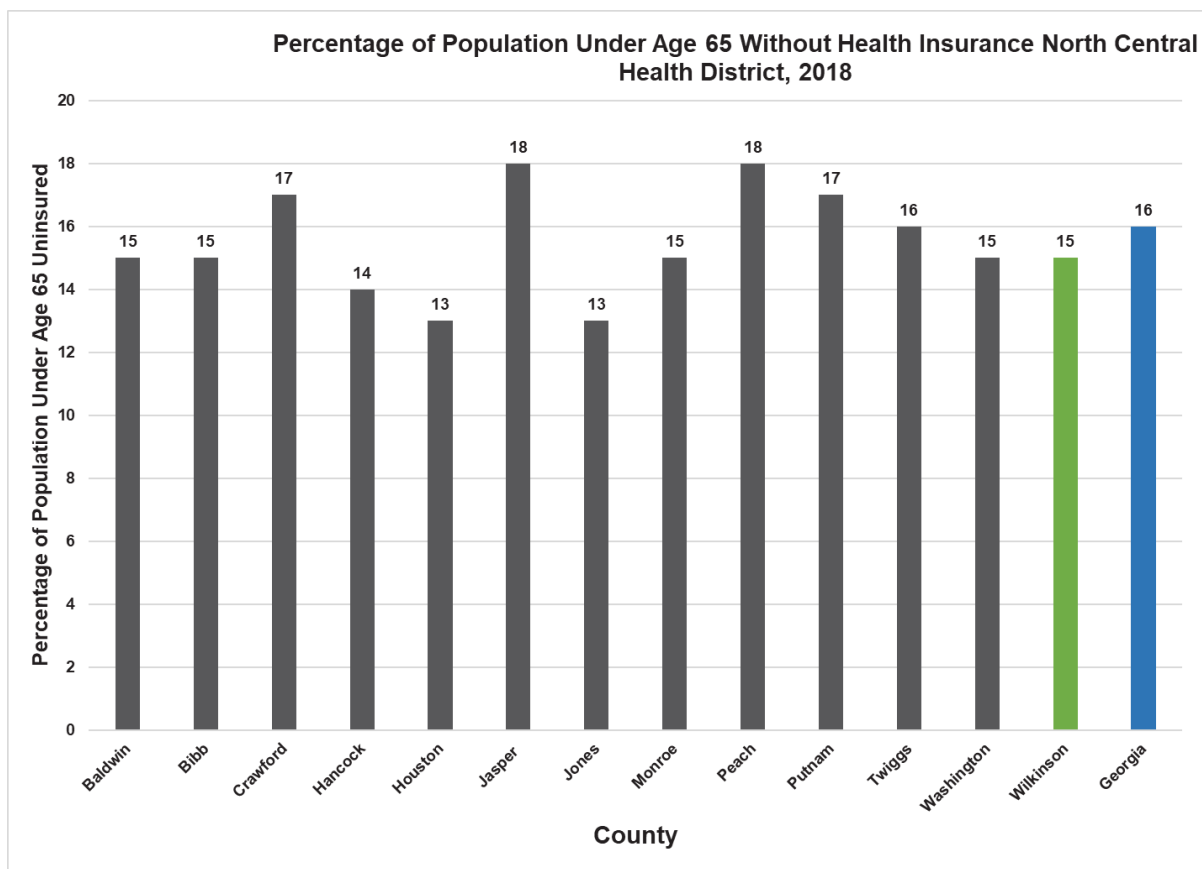
Source: FARS is a census of fatal motor vehicle crashes with a set of data files documenting all qualifying fatalities that occurred within the 50 States, the District of Columbia, and Puerto Rico since 1975. To qualify as a FARS case, the crash had to involve a motor vehicle traveling on a traffic way customarily open to the public, and must have resulted in the death of a motorist or a non-motorist within 30 days of the crash.



## Uninsured

Data Definition: Uninsured is the percentage of the population under age 65 that has no health insurance coverage.

Source: The Small Area Health Insurance Estimates uses the American Community Survey (ACS) definition of insured: Is this person CURRENTLY covered by any of the following types of health insurance or health coverage plans: Insurance through a current or former employer or union, insurance purchased directly from an insurance company, Medicare, Medicaid, Medical Assistance, or any kind of government-assistance plan for those with low incomes or a disability, TRICARE or other military health care, Indian Health Services, VA or any other type of health insurance or health coverage plan?





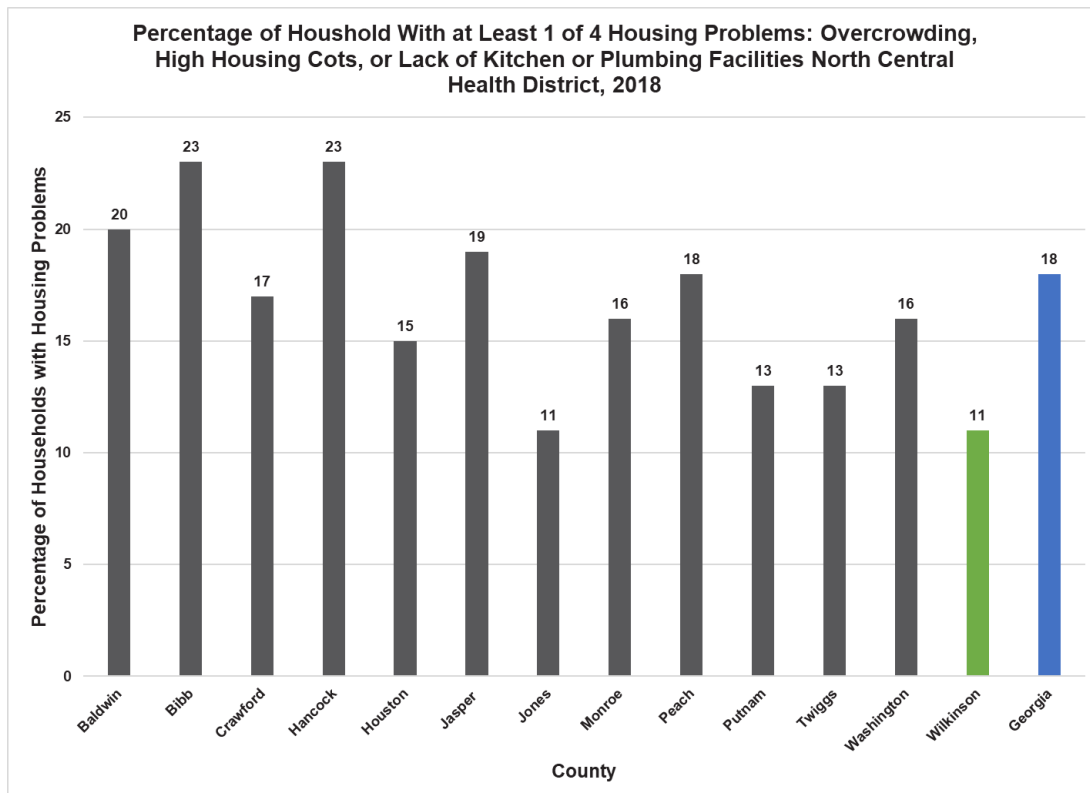
### Severe Housing Problems

Data Definition: Severe Housing Problems is the percentage of households with at least one or more of the following housing problems:

1. housing unit lacks complete kitchen facilities;
2. housing unit lacks complete plumbing facilities;
3. household is severely overcrowded; or
4. household is severely cost burdened.

Severe overcrowding is defined as more than 1.5 persons per room. Severe cost burden is defined as monthly housing costs (including utilities) that exceed 50% of monthly income.

Source: The U.S. Department of Housing and Urban Development (HUD) periodically receives "custom tabulations" of data from the U.S. Census Bureau that are largely not available through standard Census products. These data, known as the "CHAS" data (Comprehensive Housing Affordability Strategy), demonstrate the extent of housing problems and housing needs, particularly for low income households. The CHAS data are used by local governments to plan how to spend HUD funds, and may also be used by HUD to distribute grant funds.

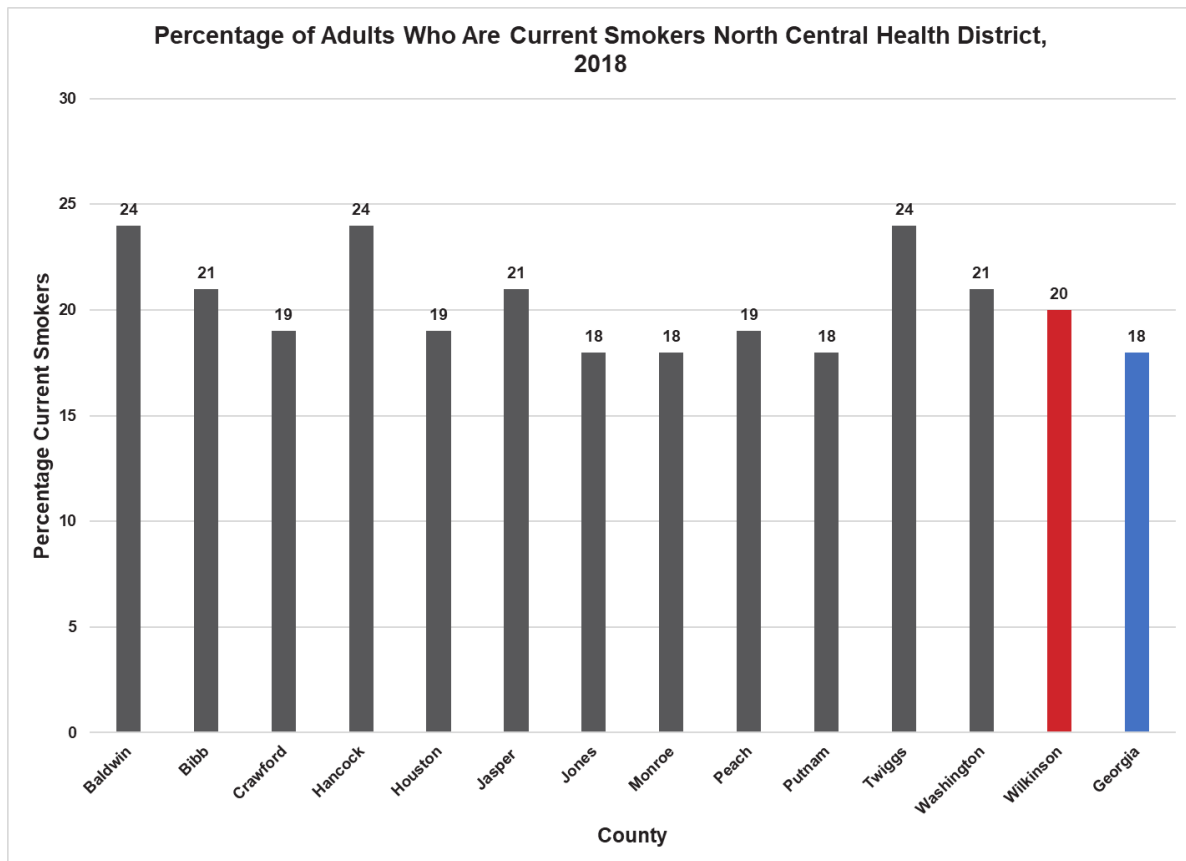


**AREA: Explore**

**Smoking**

Data Definition: Adult Smoking is the percentage of the adult population that currently smokes every day or most days and has smoked at least 100 cigarettes in their lifetime.

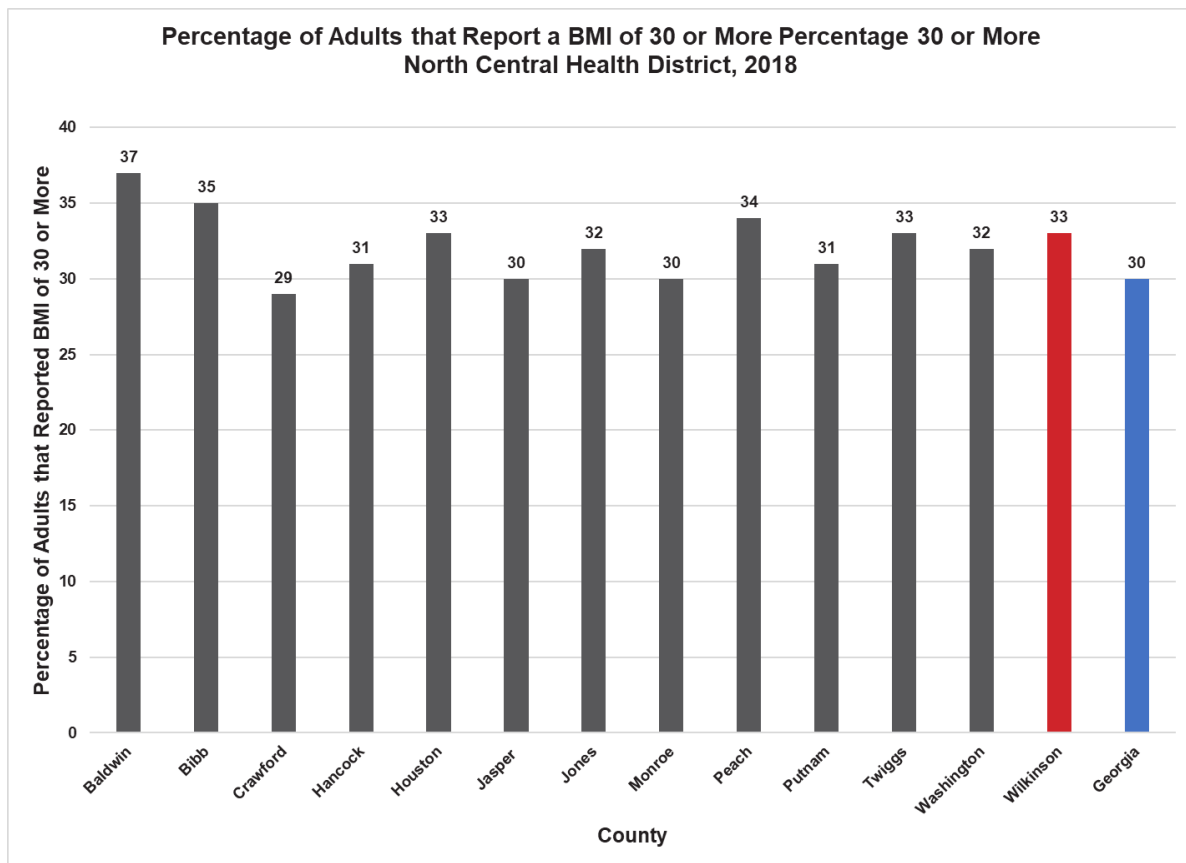
Source: The Behavioral Risk Factor Surveillance System (BRFSS) is a state-based random digit dial (RDD) telephone survey that is conducted annually in all states, the District of Columbia, and U.S. territories. Data obtained from the BRFSS are representative of each state’s total non-institutionalized population over 18 years of age and have included more than 400,000 annual respondents with landline telephones or cellphones since 2011. Data are weighted using iterative proportional fitting (also called "raking") methods to reflect population distributions.



## Obesity

Data Definition: Adult Obesity is the percentage of the adult population (age 20 and older) that reports a body mass index (BMI) greater than or equal to 30 kg/m<sup>2</sup>.

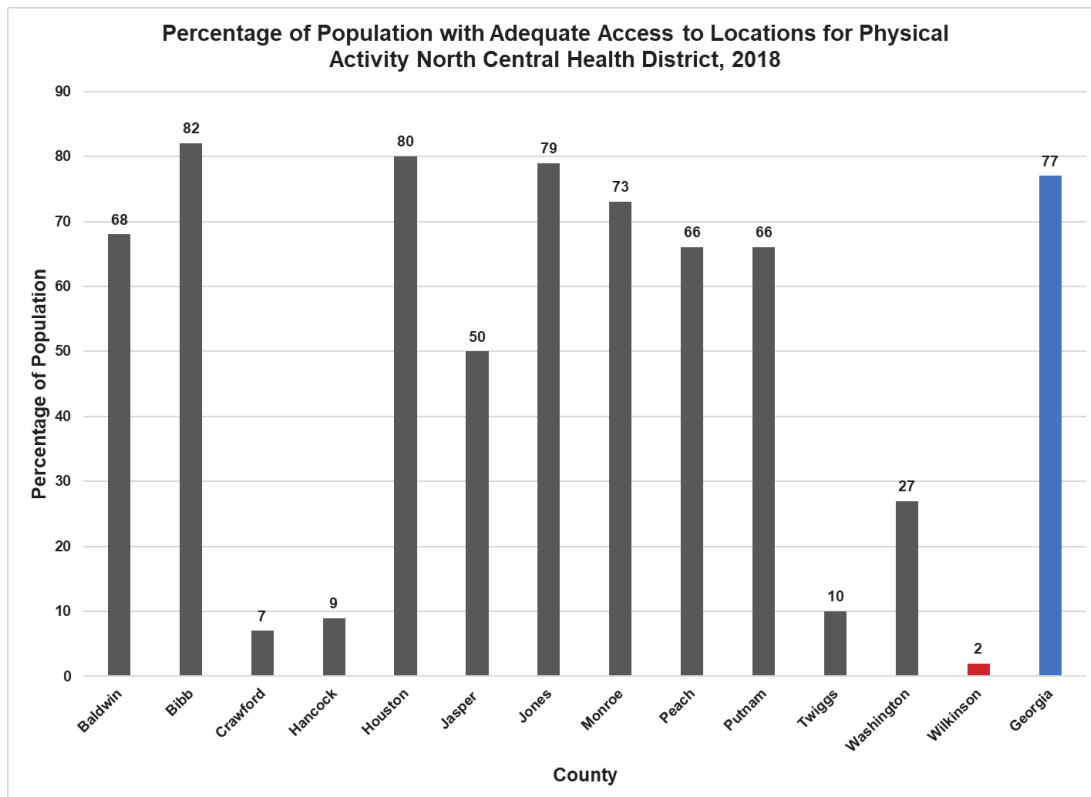
Source: The National Diabetes Surveillance System provides county-level estimates of obesity, physical inactivity, and diabetes using three years of data from CDC's Behavioral Risk Factor Surveillance System (BRFSS) and data from the U.S. Census Bureau's Population Estimates Program. The county-level estimates are based on indirect model-dependent estimates. Bayesian multilevel modeling techniques are used to obtain estimates.



### Access to Exercise Opportunities

Data Definition: Access to Exercise Opportunities measures the percentage of individuals in a county who live reasonably close to a location for physical activity. Locations for physical activity are defined as parks or recreational facilities.

Source: The ArcGIS Business Analyst, for a fee (University of Wisconsin license), provides access to robust, integrated business intelligence, including corporate families, industries, key executives and financial data. The DeLorme Map Mart and ESRI public use GIS data provide geocoded, projected data on parks at the local, state and national level across the US. US Census Tigerline files are spatial extracts from the Census Bureau's MAF/TIGER database, containing features such as roads, railroads, rivers, as well as legal and statistical geographic areas.



### Primary Care Physicians

Data Definition: Primary Care Physicians is the ratio of the population to total primary care physicians. Primary care physicians include non-federal, practicing physicians (M.D.'s and D.O.'s) under age 75 specializing in general practice medicine, family medicine, internal medicine, and pediatrics.

Source: The Area Health Resource File is a collection of data from more than 50 sources, including: the American Medical Association, American Hospital Association, US Census Bureau, Centers for Medicare & Medicaid Services, Bureau of Labor Statistics, and National Center for Health Statistics.

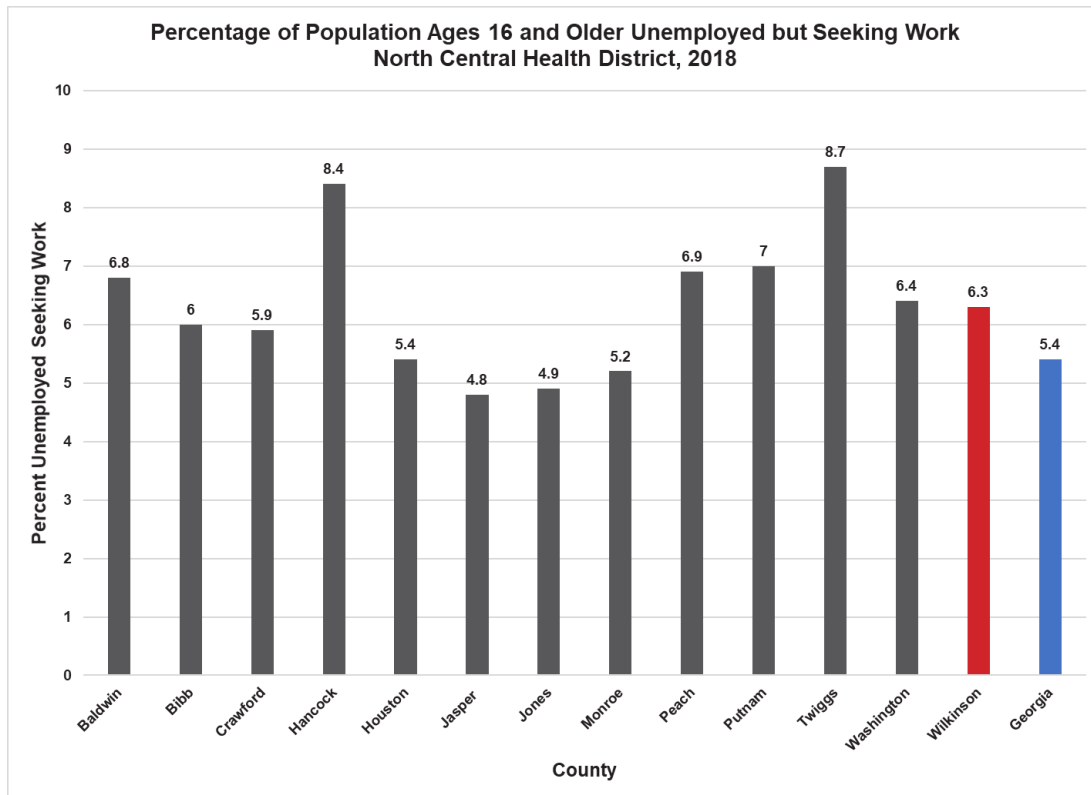
#### RATIO OF POPULATION TO PRIMARY CARE PHYSICIANS

COUNTY	Ratio
BALDWIN	1890:1
BIBB	800:1
CRAWFORD	12390:1
HANCOCK	4280:1
HOUSTON	2000:1
JASPER	3410:1
JONES	4750:1
MONROE	1690:1
PEACH	3820:1
PUTNAM	3050:1
TWIGGS	
WASHINGTON	1390:1
<b>WILKINSON</b>	<b>4580:1</b>
GEORGIA	1520:1

## Unemployment

Data Definition: Unemployment is the percentage of the civilian labor force, age 16 and older, that is unemployed but seeking work.

Source: The Local Area Unemployment Statistics (LAUS) program of the Bureau of Labor Statistics produces monthly and annual employment, unemployment, and labor force data for Census regions and divisions, states, counties, metropolitan areas, and many cities by place of residence. The LAUS estimates are consistent with the national labor force and unemployment measures from the Current Population Survey. A number of different methods are used to produce these estimates, including: (1) a signal-plus-noise time-series model for states, the District of Columbia, and some substate areas; (2) a building block approach referred to as the Handbook procedure for labor market areas; and (3) disaggregation procedures for many counties and virtually all cities.



## **Summary**

The WCHD and NCHD currently provide health programs and support health improvement policies that provide services that are scientifically supported. Programs currently supported are affordable pricing at clinics that include a sliding pay-scale, health insurance enrollment assistance, partnership with schools and businesses to provide vaccinations to staff and students, provision of coordinated care in the home, text message-based health interventions, partnerships with other community healthcare providers and agencies, and community health workers. Additional examples are free condom distribution programs throughout the community, long-acting reversible contraception access at low cost, and teen pregnancy prevention programs.

Programs to prevent injury related deaths are also being implemented by the WCHD and NCHD. These programs include car seat education and distribution campaigns. Tobacco Cessation campaigns using multiple media outlets and tobacco free policies are utilized throughout the district to curb tobacco related health issues. Recently the agency has hired an additional nutritionist outside of Women, Infant, and Children (WIC) to assist with programs related to obesity and chronic disease prevention. WIC provides nutritional services to pregnant and nursing women and children under 5 and are currently working with preschools on a project to provide WIC services to families in need through the school system. WIC is also an essential community partner to promote breastfeeding and support to women. A worksite wellness committee also provides programs to staff that promotes obesity and chronic disease prevention. Additionally, training on culturally competent health care and customer service has become a priority and evaluation of programs to ensure the quality and consistency of services and programs is being conducted throughout NCHD.

New initiatives are also being investigated that include telemedicine and additional outreach and prevention interventions that will hopefully assist in decreasing existing health gaps. The WCHD and NCHD are also implementing the Health and Human Services supported public health 3.0 model and are focusing resources on workforce development, partnerships, funding, infrastructure, and utilization of local data metrics to inform program improvement and evaluation (HHS, 2016). The adoption of this model and utilization of the information in this report will assist WCHD and NCHD

## County Health Rankings Summary – Wilkinson County

achieve its mission of “preventing disease, promoting health, and protecting Central Georgia communities against health threats through education, service, advocacy, and collaboration.”



## References

CHR&R. (2018). *County Health Rankings*. Retrieved from  
<http://www.countyhealthrankings.org/>

HHS. (2016). *Public Health 3.0: A call to action to create a 21st century public health infrastructure*.

US Census Bureau. (2018). *American Fact Finder: Community Facts*. Retrieved from  
<https://factfinder.census.gov/faces/nav/jsf/pages/index.xhtml>